



# XTV Series

## XTV 12550 Datasheet

12V Top Terminal VRLA-AGM



Valve Regulated Lead Acid (VRLA) Battery

Maintenance-Free, Absorbent Glass Mat (AGM) Technology for Efficient Gas Recombination of up to 99%

Pure Lead Construction and Proprietary Elements

Designed for Float Service Standby Power Applications in Extreme Temperature Environments

Built in Accordance with IEC 60896-21/22:2004 and UL1989 Recognized (MH14533)



### Specifications

Voltage (Vdc)	12
Nominal Capacity (1.75 VPC @25°C)	55Ah @20hr-rate
Ah Capacity (8-Hr 1.75 VPC @ 25°C)	53.6
Ah Capacity (20-Hr 1.75 VPC @ 25°C)	55.0
Ah Capacity (8-Hr 1.80 VPC @ 25°C)	52.3
Max Charge Current (A)	16.5
Max Discharge Current (A)	300
Short Circuit Current (A)	1627
Internal Resistance (mΩ)	Approx. 5.20
Terminal Type	I2 thread lead alloy terminal to accept M6 bolt
Terminal Torque	51.7±10.3 Kgf·cm / 44.9±9.0 Lbf·in / 5.1±1.0 N·m
Container Material	PP (UL 94-HB) & Flame Retardant (94-V0) available upon request
Weight (kg. / lb., Approx.)	17.90 / 39.45
Length (L) (mm / in)	228.0±2.5 / 8.98±0.10
Width (W) (mm / in)	138.4±1.5 / 5.45±0.06
Height (H) (mm / in)	206.3±2.5 / 8.12±0.10
Design Life	Up to 12 Years in Standby Service at 25°C Eurobat (20°C): >12 Years Very Long Life
Operating Temperature	Nominal: 25°C (77°F) Discharge/Charge: -20°C - 50°C (-4°F-122°F) Storage: -15°C - 40°C (5°F - 104°F)
Float Charging Voltage	13.5 - 13.8 Vdc/battery 25°C (77°F)
Eq. Charging Voltage	14.4 - 15.0 Vdc/battery 25°C (77°F)
Self-Discharge	Less than 10% after 90 days, can be stored up to 6 months at 25°C (77°F); Fully recharging is required before usage, and charged sooner if stored at higher temperature than 25°C (77°F).



# XTV Series

## XTV 12550 Datasheet

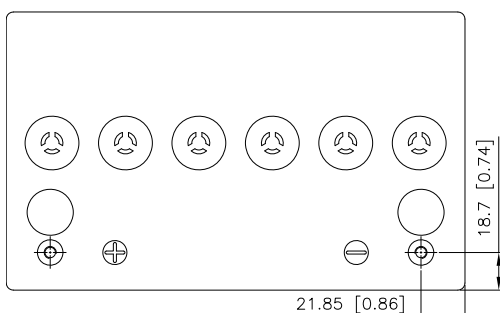
12V Top Terminal VRLA-AGM

### Constant Current Discharge Characteristics Unit: A (25°C, 77°F)

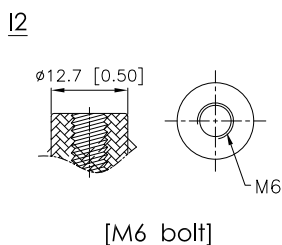
F.V/Time	5MIN	10MIN	15MIN	30MIN	60MIN	90MIN	2HR	3HR	5HR	8HR	10HR	20HR
10.02V (1.67 VPC)	227	159	119	70.1	40.0	28.5	22.5	16.1	10.5	6.83	5.55	2.80
10.50V (1.75 VPC)	194	144	112	67.9	39.4	28.0	22.1	15.8	10.3	6.70	5.41	2.75
10.80V (1.80 VPC)	172	130	105	64.9	38.1	27.3	21.7	15.4	10.1	6.54	5.31	2.73

### Constant Power Discharge Characteristics Unit: W (25°C, 77°F)

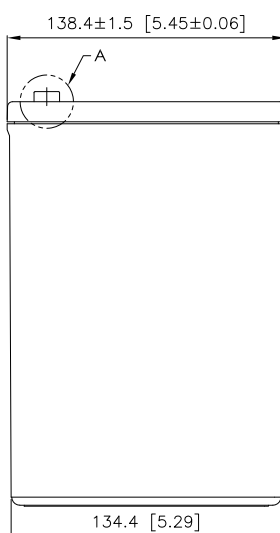
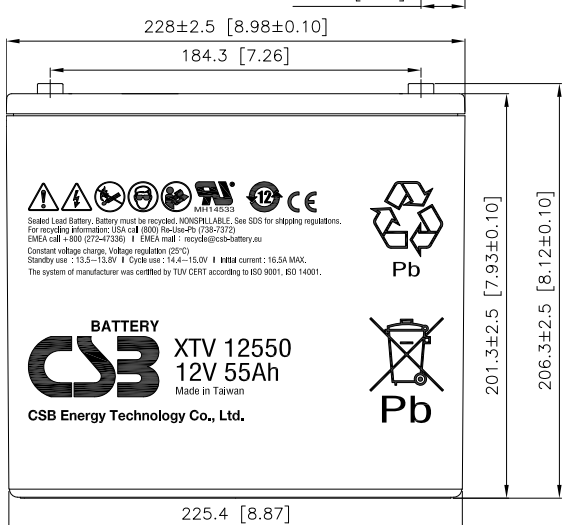
F.V/Time	5MIN	10MIN	15MIN	30MIN	60MIN	90MIN	2HR	3HR	5HR	8HR	10HR	20HR
10.02V (1.67 VPC)	2227	1642	1283	780	458	331	261	187	122	80.2	65.6	34.4
10.50V (1.75 VPC)	2010	1519	1221	761	451	327	259	185	120	78.7	64.2	33.9
10.80V (1.80 VPC)	1879	1411	1147	734	443	321	255	182	118	77.7	63.4	33.4



Detail A Drawing(3:1)



[M6 bolt]



Sealed Lead Battery. Battery must be recycled. NONSPILLABLE. See SDS for shipping regulations.
   
 For recycling information: USA call (800) 966-1649 (7285-3272)
   
 EMEA call +800 (272-47336) | EMEA mail: recycle@csb-battery.eu
   
 Constant voltage charge. Voltage regulation (25°C)
   
 Standby use: <math>13.5\text{--}13.8\text{V}</math> | Cycle use: <math>14.4\text{--}15.0\text{V}</math> | Max current: 16.5A MAX.
   
 The system of manufacture was certified by TUV CERT according to ISO 9001, ISO 14001.



**BATTERY**  
  
**XTV 12550**  
**12V 55Ah**  
 Made in Taiwan  
 CSB Energy Technology Co., Ltd.